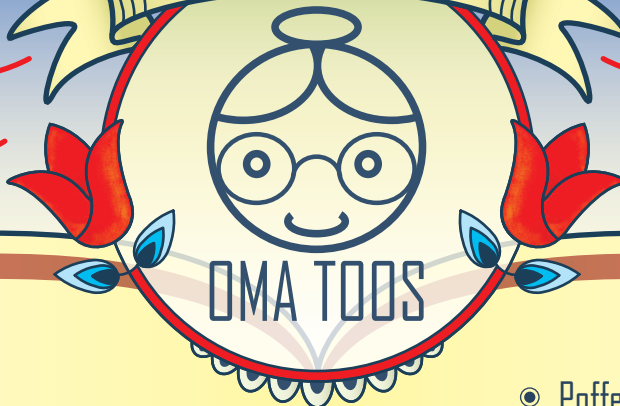


DESSERTS

PANCAKES
POFFERTJES

TRADITIONAL
DUTCH DISHES



Grandma Toos Desserts

- Children's Ice Cream 5,50
 - 2 scoops of ice cream with whipped cream in a cute child's cup to take home
- Cheesecake 7,50
 - With vanilla ice cream forest fruit sauce
- Banana split 8,00
 - Banana, chocolate sauce, vanilla ice cream, cookie crumbs and whipped cream
- Strawberry Cup 9,00
 - Fresh strawberries with vanilla ice cream, strawberry sauce, cookie crumbs and whipped cream
- Nutella dream 10,00
 - Fresh strawberries with vanilla ice cream, Nutella chocolate paste, cookie crumbs and whipped cream
- White Lady 6,50
 - Vanilla ice cream with warm chocolate sauce, cookie crumbs and whipped cream
- Syrup Waffle Cup 6,50
 - Vanilla ice cream with syrup waffle crumbs, caramel sauce and whipped cream

- Poffertjes - Mini Pancakes 8,75
 - With a scoop of ice cream and whipped cream
- Waffle 7,50
 - With scoop of ice cream and whipped cream
- Apple Pie 6,50
 - With scoop of vanilla ice cream and whipped cream
- Speciality Coffees 7,25
 - Dutch Coffee - jenever (Dutch gin)
 - Irish Coffee - Jameson whiskey
 - French Coffee - Grand Marnier
 - Italian Coffee - Amaretto
 - Spanish Coffee - Tia Maria

